

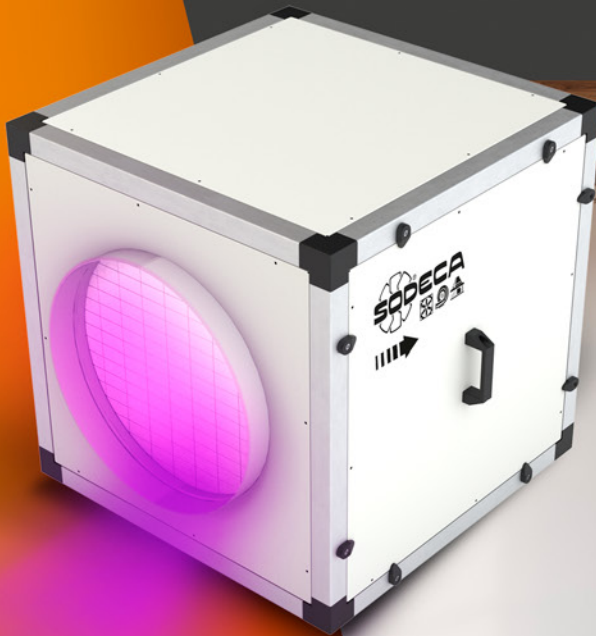
AIRVISION
COMFORT



CJK/FILTER/EC

AIR PURIFYING UNITS

- PURIFIES INDOOR AIR
- DIFFERENT STAGES OF FILTERING
- UVc GERMICIDAL CHAMBER
- IDEAL FOR RETAIL AND OTHER PREMISES
- EC MOTOR TECHNOLOGY WITH LOW POWER CONSUMPTION
- 25 MM ACOUSTIC CASING



FILTRATION
STAGE



CJK/FILTER/EC

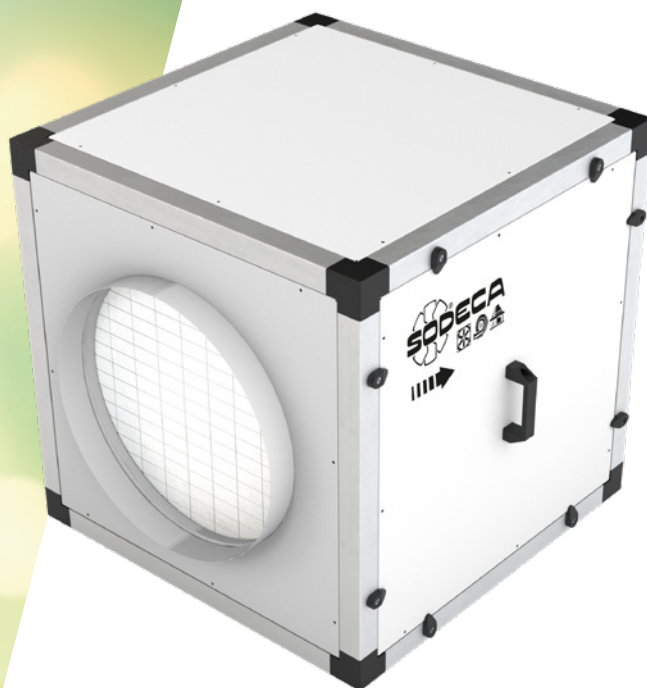
The CJK / FILTER / EC air purifying units have been designed for the movement, cleaning, odour removal and purification of air, **in high occupancy areas with high demands on soundproofing and versatility.**



ENERGY SAVING

The air inlet aperture has been designed to aid laminar air flow which, together with a dynamic pressure balancing chamber, helps to optimise efficiency.

The High Performance EC Technology electrical motor, is a key factor for reducing electrical consumption. It is also easily regulated with any 0-10 V device.



LOW SOUND LEVEL

The 25mm thick noise reducing outer panels use bespoke, high quality insulating materials and make this ideal equipment for installation in areas where a low noise level is required.



DURABILITY

The outer panels of these units are made of pre-finished sheet metal with 40mm aluminium structural frames to maximise the life of the equipment, allowing it to be installed in outdoors corrosive areas. The installation of a rain cover is recommended to prevent entry of water.



EASE OF INSTALLATION AND MAINTENANCE

The access door allows quick access to clean the impeller and replace filters.

F

FILTRATION STAGES

The units incorporate two stages of F7 + F9 or F7 + HEPA H14 filtration, depending on the model, as well as an activated carbon filter for the elimination of odours, giving a combination with excellent filtration performance.

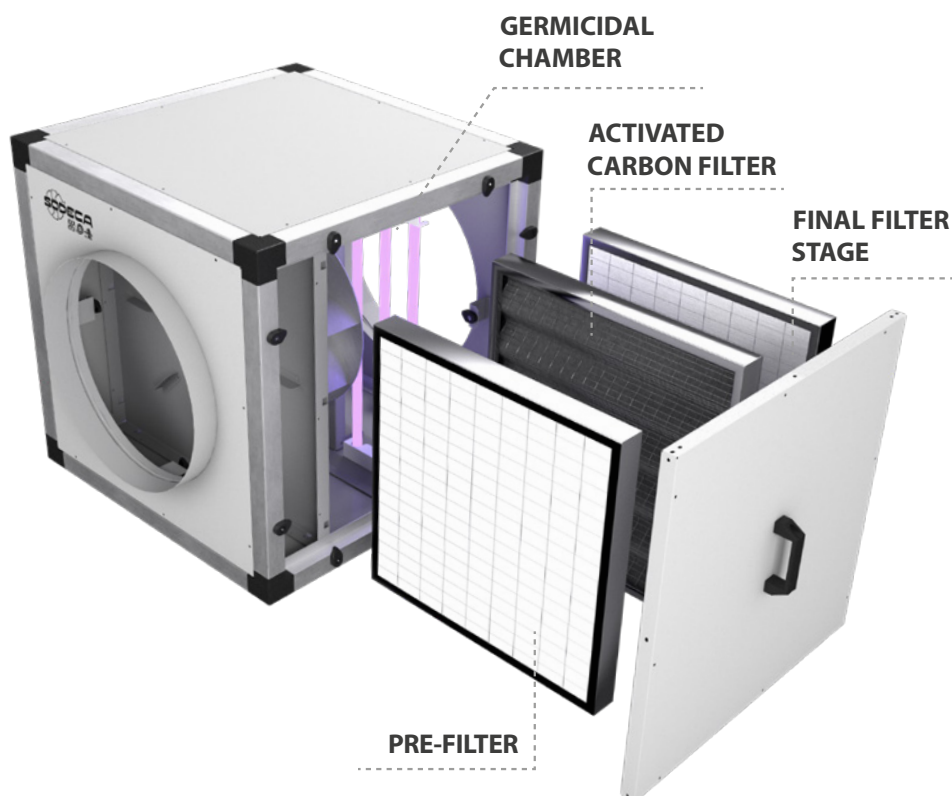
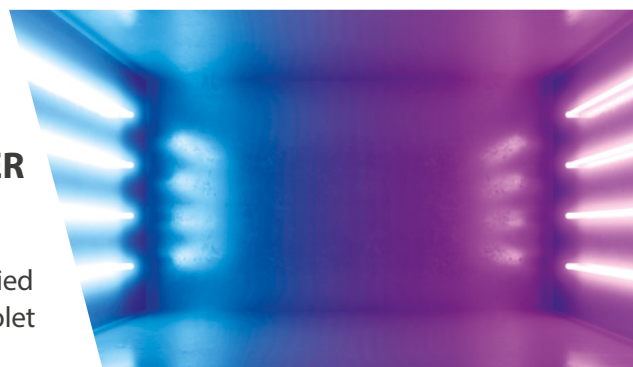


Filter replacement indicator

CG

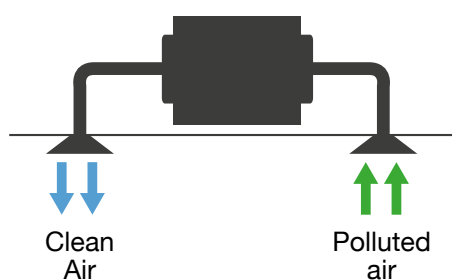
GERMICIDAL CHAMBER

Depending on model, these purification units can be supplied with an integrated UVc ultraviolet germicidal chamber.

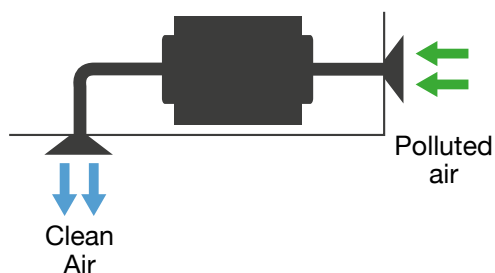


EXAMPLE OF APPLICATION

Indoor air purification

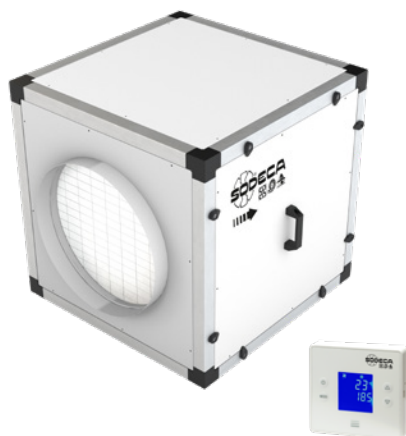
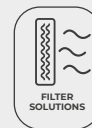


Capturing and purifying outdoor air



CJK/FILTER/EC

Air purifying units for circular ducts, 25 mm acoustic casing, EC Technology motor



Characteristics:

- 40 mm aluminium profile structure.
- Covers with a high quality, 25 mm thick acoustic casing made of prefinished sheet.
- Backward curved impeller.
- Standardised inlet and outlet flanges allowing for easy installation in ducts.
- Filtration stages, depending on model:
 - F7 + F9.
 - F7 + HEPA H14.
- Active carbon filter for odour removal.
- Adjustable filter change alarm.
- Germicidal chamber with UVC ultraviolet lamps (256 nm), depending on model.
- Inspection cover for filter maintenance and replacement.
- Air inlet nozzle with diffusers that increase the efficiency of the fan.

Motor:

- High efficiency external rotor EC Technology motors, adjustable via 0-10 V signal.
- Single-phase 200-240 V 50/60 Hz and three-phase 380-480 V 50/60 Hz.
- Maximum temperature of air to be carried: -25 °C +60 °C.

Finish:

- Aluminium profile and prefinished sheet steel structure with 25 mm thick thermal and acoustic insulation panels.

On request:

- Particle sensor for automatic control.

Order code

CJK/FILTER/EC	—	220	—	F7+F9	—	CG
↓		↓		↓		↓
CJK/FILTER/EC: Air purifying units for circular ducts, 25 mm acoustic casing, EC Technology motor		Impeller diameter in mm		Filter F7 + F9 Filter F7 + HEPA H14		Uvc germicidal chamber

Filter characteristics

Filters	EN 779	EN 1822	ISO 16890			
	Em		ISO ePM ₁	ISO ePM _{2,5}	ISO ePM ₁₀	ISO COARSE
F7	90%	-	>50%	>65-95%	>85%	-
F9	95%	-	>80%	>95%	>95%	-
HEPA H14	-	>99.995%	-	-	-	-

Technical characteristics

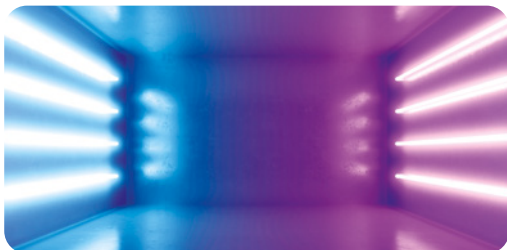
Model	Recommended effective working area ¹ (m ²)		Speed (r/min)	Maximum power (W)	Power supply	Sound pressure level at 50% of max speed. ² dB (A)	Maximum flow rate (m ³ /h)		Approx. weight (Kg)
	Filters (F7+F9)	Filters (F7+H14)					Filters (F7+F9)	Filters (F7+H14)	
CJK/FILTER/EC-220	50	-	3265	176	200-240V 50/60Hz 1Ph	48	420	-	32
CJK/FILTER/EC-250	60	-	2850	180	200-240V 50/60Hz 1Ph	49	500	-	33
CJK/FILTER/EC-310	65	55	1920	175	200-240V 50/60Hz 1Ph	47	550	450	34
CJK/FILTER/EC-400	190	155	1550	460	200-240V 50/60Hz 1Ph	47	1600	1300	68
CJK/FILTER/EC-500	270	230	1250	1150	380-480V 50/60Hz 3Ph	51	2250	1950	118

¹Recommended effective working area with a 3-meter-high premises.

² Irradiated sound pressure level in dB(A) at a distance of 3 m.

Technical characteristics of the UVc germicidal chamber

According to the model, these purification units can integrate a germicidal chamber, built with UVc ultraviolet lamps in a 256 nm spectrum, a wave width indicated to inactivate a wide variety of microorganisms by absorbing short wavelength energy through DNA and RNA.



Model	Number of lamps	Total electrical power (W)	Total Uvc radiation power (W)	Radiation dose (mJ/cm ²)*
CJK/FILTER/EC-220	6	54	16.8	7.2
CJK/FILTER/EC-250	6	54	16.8	6.0
CJK/FILTER/EC-310	6	54	16.8	6.7
CJK/FILTER/EC-400	4	102	28	5.4
CJK/FILTER/EC-500	6	153	42	7.0

*Minimum dose calculated based on the maximum flow rate.



Erp. (Energy Related Products)

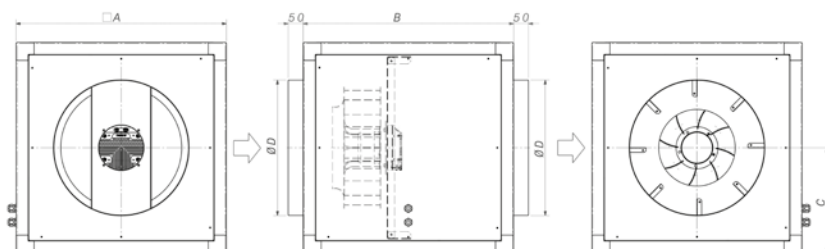
Information on Directive 2009/125/EC can be downloaded from the SODECA website or the QuickFan selector programme.

Acoustic characteristics

Sound power spectrum Lw(A) in dB(A) per Hz frequency band
Irradiated values at maximum speed and medium flow rate.

	63	125	250	500	1000	2000	4000	8000
CJK/FILTER/EC-220	63	65	63	58	55	51	45	35
CJK/FILTER/EC-250	64	66	64	59	56	52	46	36
CJK/FILTER/EC-310	62	64	62	57	54	50	44	34
CJK/FILTER/EC-400	66	61	56	53	54	49	43	32
CJK/FILTER/EC-500	69	65	60	61	61	58	59	54

Dimensions mm



	A	B	C	ØD
CJK/FILTER/EC-220	500	500	250	315
CJK/FILTER/EC-250	500	500	250	355
CJK/FILTER/EC-310	500	500	250	355
CJK/FILTER/EC-400	700	700	350	450
CJK/FILTER/EC-500	900	900	450	500

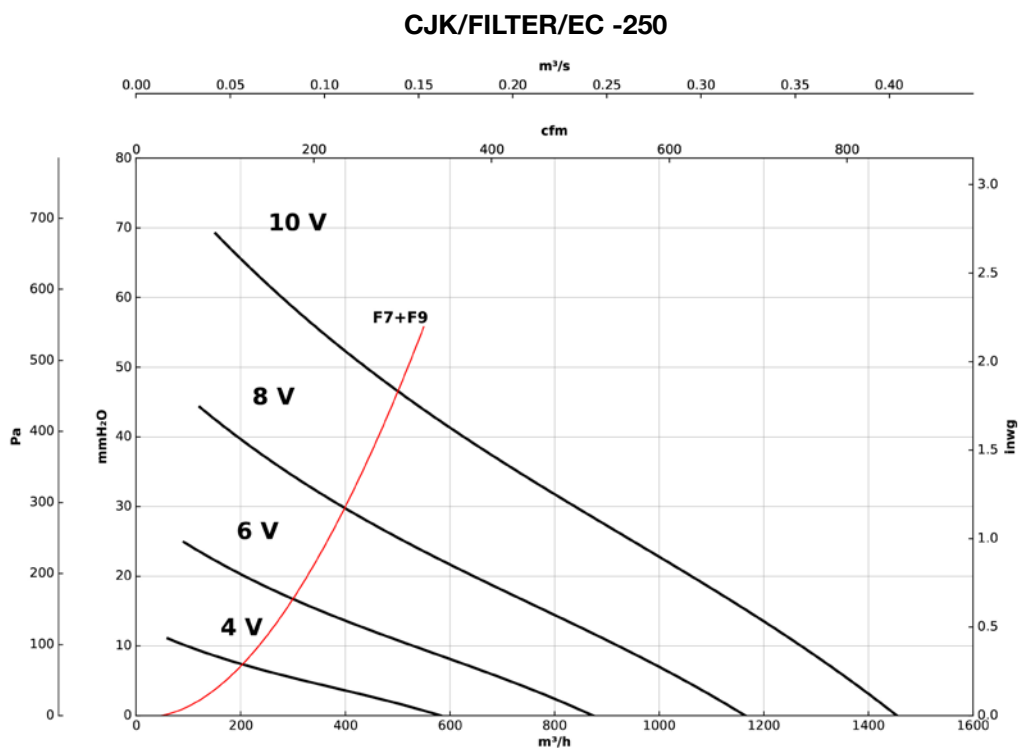
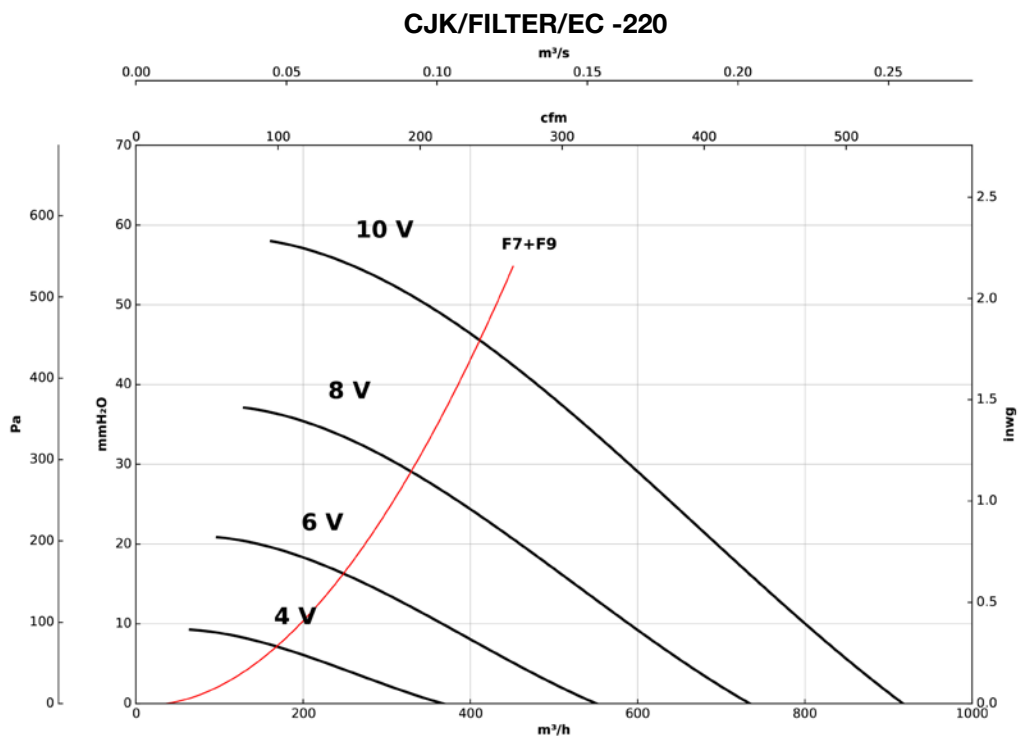
Accessories



Characteristic curves

Q= Flow rate in m³/h, m³/s and cfm

Pe= Static pressure in mm H₂O, Pa and inwg

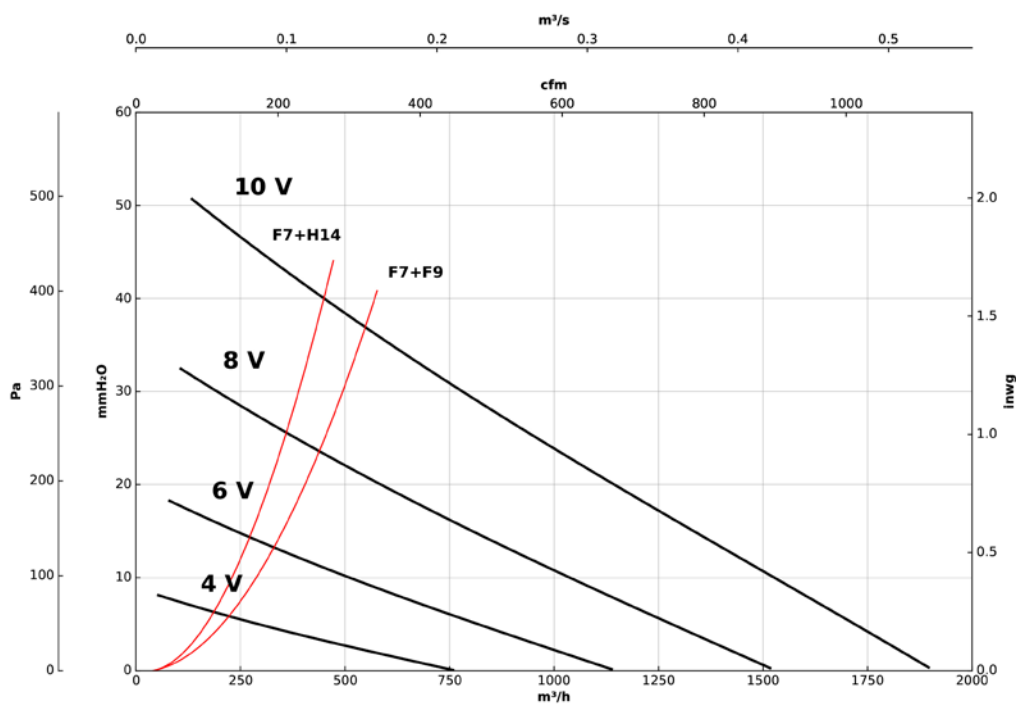


Characteristic curves

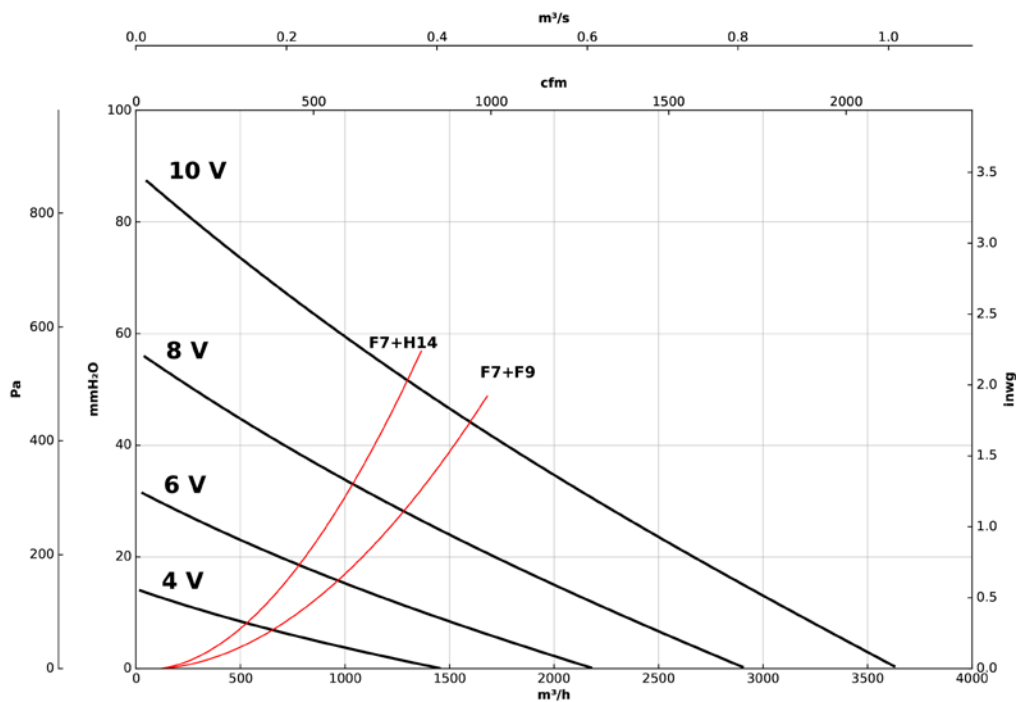
Q= Flow rate in m³/h, m³/s and cfm

Pe= Static pressure in mm H₂O, Pa and inwg

CJK/FILTER/EC -310



CJK/FILTER/EC -400



Characteristic curves

Q= Flow rate in m³/h, m³/s and cfm

Pe= Static pressure in mm H₂O, Pa and inwg

CJK/FILTER/EC -500

